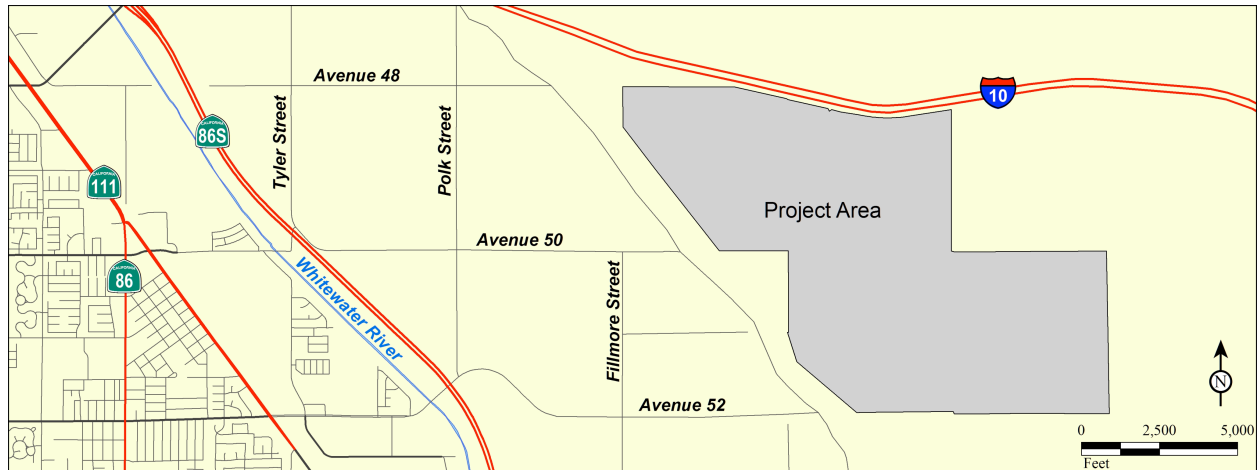


## NOTICE OF PUBLIC SCOPING MEETING

NOTICE IS HEREBY GIVEN that the City of Coachella will hold a public scoping meeting at the Coachella City Hall on Tuesday, August 28, 2012, to accept oral and written comments regarding environmental review of the La Entrada Specific Plan.



The City of Coachella intends to prepare an Environmental Impact Report (EIR) per the California Environmental Quality Act (CEQA) for the La Entrada Specific Plan. The proposed project is a comprehensive amendment to and expansion of the previously-approved McNaughton Specific Plan. The site is located south of Interstate 10 and east of the Coachella Branch of the All-American Canal. It consists of approximately 2,200 acres, of which approximately 1,612 acres are currently in the City of Coachella, and 588 acres are in unincorporated Riverside County. Development would include 7,800 dwelling units, 1,510,970 square feet of commercial uses, plus community facilities, four elementary schools, infrastructure, parks and open space. A scoping meeting is being held to provide an opportunity to provide public input on the project and provide input on issues to be addressed in the EIR.

The case file for the proposed project are available for public inspection Monday through Thursday, from 7:30 a.m. to 6:00 p.m. at the City of Coachella Development Services Department located at the address below. Se Habla Español.

Any questions or comments may be directed to:

Luis Lopez  
City of Coachella Planning Division  
1515 Sixth Street, Coachella CA 92236  
(760) 398-3102

COMMENTS MAY BE GIVEN AT the Public Meeting on Tuesday, August 28, 2012, at 6:00 P.M. in the City Council Chambers, 1515 Sixth Street, Coachella, CA 92236.